

Correction

Correction: Implementation of a large-scale solar photovoltaic system at a higher education institution in Illinois, USA

Jin H. Jo ^{1,*}, Kadi Ilves ², Tyler Barth ¹, and Ellen Leszczynski ¹

¹ Department of Technology, Illinois State University, Normal, IL, 61790-5100, USA

² Department of Economics, Illinois State University, Normal, IL, USA

* **Correspondence:** Email: jjo@ilstu.edu; Tel: (309)-438-7793.

A correction on

Implementation of a large-scale solar photovoltaic system at a higher education institution in Illinois, USA

by Jin H. Jo, Kadi Ilves, Tyler Barth, Ellen Leszczynski. *AIMS Energy*, 2017, 5(1): 54-62. doi: 10.3934/energy.2017.1.54

In the original article [1], we did not notice the figures sequence in section 2 was not correct. It should start from figure 1 as follows:

The Kingsley Street parking lot (Lot G53) (Fig. 1.), roof of the Center for Performing Arts (CPA) (Fig. 2.), and the Center for Renewable Energy (CRE) (Fig. 3.) were selected.

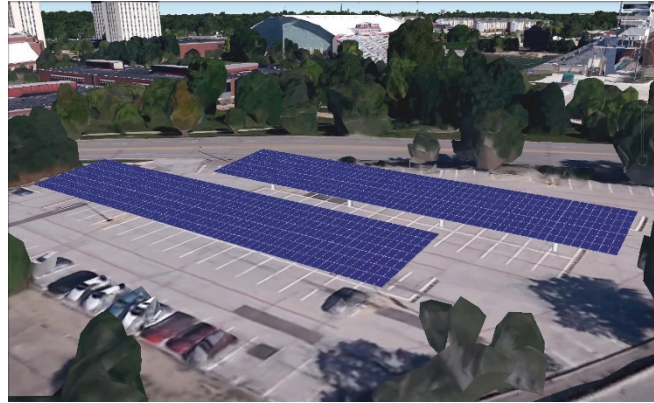


Figure 1. 3D rendering of Kingsley (G53) parking lot PV canopy system.



Figure 2. 3D rendering of Center for Performing Arts rooftop PV system.



Figure 3. 3D rendering of Center for Renewable Energy ground mounted PV system (phase one system size outlined in red color).

The error was introduced during production. We apologize for any inconvenience caused to the readers by this change. This error does not change the scientific conclusions of the article in any way. The original manuscript will remain online on the article webpage.

Conflict of Interest

All authors declare no conflicts of interest in this paper.

References

1. Jo JH, Ilves K, Barth T, et al. (2017) Implementation of a large-scale solar photovoltaic system at a higher education institution in Illinois, USA. *AIMS Energy* 5: 54-62.



AIMS Press

© 2017 Jin H. Jo, et al., licensee AIMS Press. This is an open access article distributed under the terms of the Creative Commons Attribution License (<http://creativecommons.org/licenses/by/4.0>)