

*Research article*

**Social assistance and workers’ long-term wellbeing in Egypt**

**Vladimir Hlasny\***

Economics Department, Ewha Womans University, Seoul, Republic of Korea

\* **Correspondence:** Email: [vhlasny@gmail.com](mailto:vhlasny@gmail.com).

**Supplementary**

**Appendix**

**Table A.1.** Descriptive statistics of model variables.

	N	Mean	St.Dev.	Min	Max
<i>Dependent variables</i>					
Food insecurity (Severe)	9,279	0.12*	0.43*	0	2
Food insecurity (Vulnerability/moderate)	9,329	0.25*	0.61*	0	2
Job satisfaction	9,329	1.24*	0.72*	0	2
<i>Lagged dependent variables</i>					
Job satisfaction ‘12: Non-satisfied	9,329	0.28	0.45	0	1
Job satisfaction ‘12: Rather satisfied	9,329	0.28	0.45	0	1
<i>Lagged program participation</i>					
Vocational training (Public-funded) ‘12	9,329	0.05	0.21	0	1
Vocational training (Private-funded) ‘12	9,329	0.05	0.23	0	1
Health insurance (Public-provided) ‘12	9,329	0.02	0.15	0	1
Health insurance (Private-provided) ‘12	9,329	0.37	0.48	0	1
Log (Pension) 2012	9,329	1.05	2.33	0	9.62
Log (MOSS assistance) 2012	9,329	0.22	1.05	0	7.44

*Continued on next page*

	N	Mean	St.Dev.	Min	Max
Log (Nonprofit) 2012	9,329	0.03	0.41	0	7.09
<i>Contemporaneous program participation</i>					
Log (Takaful) 2018	9,329	0.29	1.29	0	7.08
Log (Karama) 2018	9,329	0.10	0.79	0	8.52
Log (Food Smart Card) 2018	9,309	4.21	1.96	0	7.82
Log (Other assistance) 2018	9,323	0.16	0.97	0	7.60
<i>Demographics</i>					
Reads & writes	9,329	0.07	0.26	0	1
Less than intermediate edu.	9,329	0.13	0.33	0	1
Intermediate edu.	9,329	0.36	0.48	0	1
Above intermediate edu.	9,329	0.24	0.43	0	1
Age-17	9,329	24.30	9.02	2	42
Age-17 squared	9,329	671.71	459.73	4	1,764
Male	9,329	0.80	0.40	0	1
Wealth decile 2012	9,329	5.62	2.78	1	10
Married	9,329	0.86	0.35	0	1
Household size	9,329	4.43	1.31	1	6
Urban	9,329	0.42	0.49	0	1
Governorate	9,329	15.64*	8.03*	1	29

Source: Authors' calculations based on ELMPS 2012 & 2018, using individual-level weights. \* Ordinal categorical variables where the specific values are not used in models.

**Table A.2.** Multinomial logit regressions of workers' food security, Egypt 2018.

	Was there ever no food to eat of any kind in your hshld.?				Did you worry that your hshld. would not have food?			
	Model 1 (lagged assistance)		Model 2 (lagged+current)		Model 1 (lagged assist.)		Model 2 (lagged+current)	
	Rarely (1–2/mo)	Sometimes/ often (3+)	Rarely (1–2/mo)	Sometimes/ Often (3+)	Rarely (1–2/mo)	Sometimes/ Often (3+)	Rarely (1–2/mo)	Sometimes/ Often (3+)
Vocational Training (Public) 2012	–0.215 (0.360)	–0.474 (0.490)	–0.230 (0.365)	–0.473 (0.497)	–0.061 (0.345)	–0.562 (0.355)	–0.063 (0.328)	–0.533 (0.346)
Health Insurance (Public) 2012	–0.115 (0.350)	–0.717 (0.552)	–0.194 (0.366)	–0.723 (0.556)	0.038 (0.278)	–0.468* (0.273)	0.017 (0.290)	–0.548* (0.284)
Log (Pension) 2012	–0.027 (0.029)	–0.060* (0.032)	–0.029 (0.028)	–0.064** (0.032)	–0.063*** (0.022)	–0.007 (0.020)	–0.064*** (0.023)	–0.013 (0.020)
Log (MOSS Assistance) 2012	0.084* (0.045)	–0.015 (0.049)	0.083* (0.045)	–0.016 (0.051)	0.055 (0.045)	0.057 (0.035)	0.050 (0.045)	0.034 (0.038)
Log (NGO Assistance) 2012	–0.102 (0.165)	–0.087 (0.137)	–0.112 (0.167)	–0.102 (0.140)	–0.040 (0.132)	0.066 (0.087)	–0.043 (0.131)	0.064 (0.086)
Log (Takaful) 2018			0.015 (0.046)	0.050 (0.042)			0.104*** (0.037)	0.043 (0.029)
Log (Karama) 2018			–0.086 (0.052)	–0.143** (0.066)			0.188*** (0.046)	0.093** (0.038)
Log (Food Smart Card) 2018			–0.073* (0.038)	–0.039 (0.039)			0.112*** (0.035)	0.085*** (0.029)
Log (Other Assistance) 2018			0.034 (0.045)	0.053 (0.055)			–0.001 (0.045)	0.168*** (0.032)
Vocational Training (Private) 2012	–0.062 (0.349)	0.191 (0.420)	–0.046 (0.350)	0.185 (0.420)	–0.191 (0.271)	–0.145 (0.241)	–0.266 (0.281)	–0.153 (0.240)
Health Insurance (Private) 2012	–0.082 (0.195)	–0.138 (0.223)	–0.081 (0.195)	–0.120 (0.223)	–0.390*** (0.139)	–0.303** (0.141)	–0.340** (0.141)	–0.271* (0.142)
Reads & Writes	–0.251 (0.257)	–0.639** (0.281)	–0.246 (0.259)	–0.664** (0.285)	–0.013 (0.202)	–0.243 (0.180)	0.012 (0.203)	–0.204 (0.184)
Less than Intermed.	–0.063 (0.226)	–0.345 (0.214)	–0.067 (0.231)	–0.345 (0.217)	–0.165 (0.170)	–0.329** (0.155)	–0.108 (0.170)	–0.298* (0.156)

*Continued on next page*

	Was there ever no food to eat of any kind in your hshld.?				Did you worry that your hshld. would not have food?			
	Model 1 (lagged assistance)		Model 2 (lagged+current)		Model 1 (lagged assist.)		Model 2 (lagged+current)	
	Rarely (1–2/mo)	Sometimes/ often (3+)	Rarely (1–2/mo)	Sometimes/ Often (3+)	Rarely (1–2/mo)	Sometimes/ Often (3+)	Rarely (1–2/mo)	Sometimes/ Often (3+)
Intermed. Edu.	–0.383** (0.177)	–1.116*** (0.181)	–0.388** (0.181)	–1.113*** (0.182)	–0.384*** (0.141)	–0.700*** (0.134)	–0.319** (0.140)	–0.642*** (0.135)
Above Interm. Edu.	–1.049*** (0.246)	–1.299*** (0.274)	–1.054*** (0.251)	–1.301*** (0.276)	–0.676*** (0.205)	–1.434*** (0.212)	–0.577*** (0.205)	–1.371*** (0.215)
Age-17	0.015 (0.041)	–0.013 (0.042)	0.017 (0.041)	–0.015 (0.043)	–0.027 (0.031)	0.011 (0.029)	–0.041 (0.031)	0.004 (0.030)
Age-17 squared	–0.000 (0.001)	–0.000 (0.001)	–0.000 (0.001)	0.000 (0.001)	0.001 (0.001)	–0.000 (0.001)	0.001 (0.001)	–0.000 (0.001)
Urban	0.214 (0.167)	–0.345** (0.174)	0.212 (0.167)	–0.341* (0.175)	–0.034 (0.119)	–0.081 (0.116)	0.009 (0.119)	–0.056 (0.117)
Male	0.085 (0.178)	0.179 (0.197)	0.073 (0.178)	0.169 (0.197)	0.028 (0.138)	0.236* (0.141)	0.061 (0.140)	0.257* (0.142)
Wealth decile (1 Lowest, 5 Top) ‘12	–0.129*** (0.033)	–0.147*** (0.031)	–0.132*** (0.033)	–0.146*** (0.031)	–0.085*** (0.023)	–0.119*** (0.024)	–0.082*** (0.023)	–0.113*** (0.024)
Married	0.059 (0.208)	–0.077 (0.229)	0.025 (0.212)	–0.083 (0.229)	0.048 (0.160)	–0.106 (0.148)	0.084 (0.165)	0.031 (0.147)
Household size	0.125** (0.051)	0.102* (0.054)	0.156*** (0.053)	0.122** (0.057)	0.121*** (0.042)	0.186*** (0.037)	0.062 (0.044)	0.145*** (0.039)
Governorate Indicters	Y***	Y***	Y***	Y***	Y***	Y***	Y***	Y***
Constant	–4.584*** (0.743)	–3.245*** (0.832)	–4.442*** (0.748)	–3.177*** (0.827)	–2.096*** (0.484)	–2.356*** (0.446)	–2.315*** (0.509)	–2.658*** (0.459)
Observations	9,279	9,279	9,242	9,242	9,329	9,329	9,292	9,292
Chi-squared	45,306***	45,306***	42,363***	42,363***	23,049***	23,049***	23,443***	23,443***
Pseudo-R-squared	0.162	0.162	0.165	0.165	0.154	0.154	0.165	0.165

Notes: Authors’ calculations based on ELMPS 2012 & 2018. Samples weighted using individual-level weights. Standard errors robust to heteroskedasticity in parentheses, \*\*\* indicates  $p < 0.01$ , \*\* indicates  $p < 0.05$ , \* indicates  $p < 0.1$ . Baseline category “Never experienced”.

**Table A.3.** Multinomial logit regressions of workers' job satisfaction, Egypt 2018.

	Model 1 (lagged assistance)		Model 2 (lagged+current assist.)		Model 3 (lagged+current assist. and lagged dep.var.)	
	Not rather satisf. or fully satisf.	Rather satisfied	Not rather satisf. or fully satisf.	Rather satisfied	Not rather satisf. or fully satisf.	Rather satisfied
Vocational Training (Public) 2012	-0.258 (0.285)	-0.294* (0.162)	-0.263 (0.284)	-0.301* (0.162)	-0.266 (0.284)	-0.299* (0.162)
Health Insurance (Public) 2012	-0.416* (0.247)	-0.505** (0.239)	-0.383 (0.247)	-0.498** (0.239)	-0.357 (0.247)	-0.475** (0.238)
Log (Pension) 2012	0.036* (0.019)	0.060*** (0.016)	0.038** (0.019)	0.060*** (0.015)	0.033* (0.019)	0.057*** (0.015)
Log (MOSS Assistance) 2012	0.034 (0.033)	0.030 (0.030)	0.031 (0.033)	0.028 (0.030)	0.039 (0.033)	0.034 (0.030)
Log (NGO Assistance) 2012	-0.001 (0.082)	-0.038 (0.083)	-0.003 (0.083)	-0.040 (0.082)	-0.003 (0.082)	-0.041 (0.083)
Log (Takaful) 2018			0.052* (0.031)	0.042 (0.027)	0.054* (0.031)	0.044 (0.027)
Log (Karama) 2018			0.033 (0.039)	0.009 (0.038)	0.029 (0.039)	0.006 (0.038)
Log (Food Smart Card) 2018			-0.064*** (0.023)	0.002 (0.021)	-0.064*** (0.023)	0.001 (0.021)
Log (Other Assistance) 2018			0.015 (0.037)	-0.010 (0.036)	0.010 (0.038)	-0.012 (0.036)
Vocational Training (Private) 2012	-0.126 (0.236)	-0.029 (0.149)	-0.130 (0.236)	-0.032 (0.150)	-0.124 (0.235)	-0.024 (0.151)
Health Insurance (Private) 2012	-1.807*** (0.118)	-0.768*** (0.081)	-1.795*** (0.118)	-0.754*** (0.082)	-1.690*** (0.121)	-0.684*** (0.084)
Reads & Writes	-0.630*** (0.175)	-0.356** (0.155)	-0.619*** (0.175)	-0.353** (0.156)	-0.645*** (0.175)	-0.373** (0.154)
Less than Intermed.	-0.433*** (0.149)	-0.346** (0.138)	-0.429*** (0.149)	-0.339** (0.139)	-0.451*** (0.151)	-0.354** (0.139)
Intermed. Edu.	-0.547*** (0.124)	-0.420*** (0.109)	-0.525*** (0.125)	-0.412*** (0.110)	-0.560*** (0.126)	-0.434*** (0.111)

*Continued on next page*

	Model 1 (lagged assistance)		Model 2 (lagged+current assist.)		Model 3 (lagged+current assist. and lagged dep.var.)	
	Not rather satisf. or fully satisf.	Rather satisfied	Not rather satisf. or fully satisf.	Rather satisfied	Not rather satisf. or fully satisf.	Rather satisfied
Above Interm. Edu.	-1.388*** (0.163)	-0.896*** (0.129)	-1.375*** (0.164)	-0.883*** (0.130)	-1.411*** (0.165)	-0.903*** (0.131)
Age-17	-0.147*** (0.025)	-0.106*** (0.023)	-0.144*** (0.025)	-0.108*** (0.023)	-0.144*** (0.025)	-0.108*** (0.023)
Age-17 squared	0.002*** (0.000)	0.001*** (0.000)	0.002*** (0.000)	0.001*** (0.000)	0.002*** (0.000)	0.001*** (0.000)
Urban	-0.008 (0.098)	0.059 (0.081)	-0.014 (0.099)	0.067 (0.082)	-0.009 (0.099)	0.069 (0.082)
Male	-1.200*** (0.103)	0.446*** (0.096)	-1.211*** (0.104)	0.447*** (0.096)	-1.262*** (0.104)	0.420*** (0.096)
Wealth decile (1 Lowest, 5 Top) '12	-0.056*** (0.019)	-0.029* (0.016)	-0.052*** (0.019)	-0.028* (0.016)	-0.041** (0.019)	-0.021 (0.016)
Married	-0.182 (0.129)	0.197* (0.118)	-0.217* (0.130)	0.199* (0.121)	-0.219* (0.131)	0.194 (0.121)
Household size	0.019 (0.033)	0.027 (0.029)	0.036 (0.034)	0.025 (0.030)	0.037 (0.034)	0.026 (0.029)
Non-satisfied with job '12					0.505*** (0.104)	0.325*** (0.089)
Rather satisfied with job '12					0.283*** (0.103)	0.193** (0.085)
Governorate Indictors	Y***	Y***	Y***	Y***	Y***	Y***
Constant	2.440*** (0.366)	1.950*** (0.310)	2.528*** (0.369)	1.941*** (0.312)	2.176*** (0.378)	1.723*** (0.318)
Observations	9,333	9,333	9,296	9,296	9,296	9,296
Chi-squared	1,486***	1,486***	1,506***	1,506***	1,528***	1,528***
Pseudo-R-squared	0.150	0.150	0.151	0.151	0.153	0.153

Notes: Authors' calculations based on ELMPS 2012 & 2018. Samples weighted using individual-level weights. Standard errors robust to heteroskedasticity in parentheses, \*\*\* indicates  $p < 0.01$ , \*\* indicates  $p < 0.05$ , \* indicates  $p < 0.1$ . Baseline category "Fully satisfied".

**Table A.4.** Governorate-level effects from regressions in Tables 2 and 3.

	Was there ever no food to eat of any kind in your hshld.?				Did you worry that your hshld. would not have food?				Are you satisfied with your current job?			
	Model 1		Model 2		Model 1		Model 2		Model 1		Model 2	
	Rarely	Sometimes/oft	Rarely	Sometimes/oft	Rarely	Sometimes/oft	Rarely	Sometimes/oft	Not	Rather	Not	Rather
Alex.	1.609** (0.676)	2.732*** (0.760)	1.522** (0.676)	2.691*** (0.754)	1.147*** (0.305)	1.529*** (0.319)	1.326*** (0.305)	1.691*** (0.328)	1.737*** (0.256)	1.039*** (0.206)	1.726*** (0.258)	1.056** (0.207)
Port-Said	1.123 (1.178)	-20.687*** (0.726)	1.170 (1.177)	-20.659*** (0.729)	-0.974 (1.025)	-20.252*** (0.316)	-1.015 (1.029)	-20.602*** (0.324)	-0.104 (0.421)	-0.207 (0.306)	-0.121 (0.417)	-0.215 (0.306)
Suez	-21.507** (0.659)	-21.027*** (0.789)	-21.526* (0.682)	-21.025*** (0.796)	0.087 (0.659)	2.749*** (0.430)	0.100 (0.660)	2.771*** (0.431)	-0.014 (0.523)	0.754* (0.436)	-0.024 (0.533)	0.763* (0.437)
Damietta	2.581*** (0.641)	1.483* (0.818)	2.585*** (0.640)	1.497* (0.820)	1.000*** (0.298)	0.077 (0.414)	1.070*** (0.296)	0.123 (0.421)	1.295*** (0.334)	1.990*** (0.231)	1.334*** (0.333)	2.001** (0.231)
Dakahlia	3.123*** (0.619)	3.569*** (0.727)	3.185*** (0.616)	3.596*** (0.732)	1.285*** (0.286)	2.055*** (0.304)	1.281*** (0.284)	2.045*** (0.312)	1.281*** (0.246)	1.171*** (0.172)	1.355*** (0.244)	1.192** (0.174)
Sharkia	1.101 (0.688)	-1.135 (1.061)	1.158* (0.684)	-1.094 (1.064)	-0.084 (0.329)	-0.450 (0.405)	-0.053 (0.326)	-0.441 (0.413)	0.848*** (0.250)	0.722*** (0.175)	0.939*** (0.247)	0.740** (0.176)
Kalyoubia	1.905*** (0.653)	0.287 (0.880)	1.841*** (0.662)	0.284 (0.874)	0.315 (0.307)	-0.735* (0.429)	0.443 (0.314)	-0.574 (0.438)	1.401*** (0.263)	1.158*** (0.194)	1.354*** (0.269)	1.181** (0.195)
Kafr-Elsheikh	1.394** (0.677)	-0.948 (1.020)	1.454** (0.673)	-0.933 (1.024)	-0.372 (0.332)	-3.657*** (1.043)	-0.447 (0.332)	-3.761*** (1.043)	0.086 (0.267)	0.066 (0.171)	0.129 (0.266)	0.067 (0.173)
Gharbia	2.441*** (0.630)	2.998*** (0.734)	2.521*** (0.626)	3.052*** (0.740)	0.250 (0.311)	0.996*** (0.321)	0.219 (0.308)	0.999*** (0.328)	0.156 (0.264)	0.641*** (0.170)	0.235 (0.262)	0.652** (0.171)
Menoufia	2.112*** (0.672)	1.735** (0.782)	2.174*** (0.671)	1.772** (0.787)	1.223*** (0.304)	1.590*** (0.342)	1.235*** (0.302)	1.629*** (0.349)	0.907*** (0.267)	0.585*** (0.199)	0.988*** (0.265)	0.607** (0.200)
Behera	-0.822 (0.923)	-2.648** (1.239)	-0.800 (0.920)	-2.644** (1.241)	-4.084* (1.042)	-3.654*** (0.786)	-4.075*** (1.042)	-3.658*** (0.789)	0.643*** (0.242)	0.394** (0.172)	0.705*** (0.240)	0.405** (0.173)

*Continued on next page*

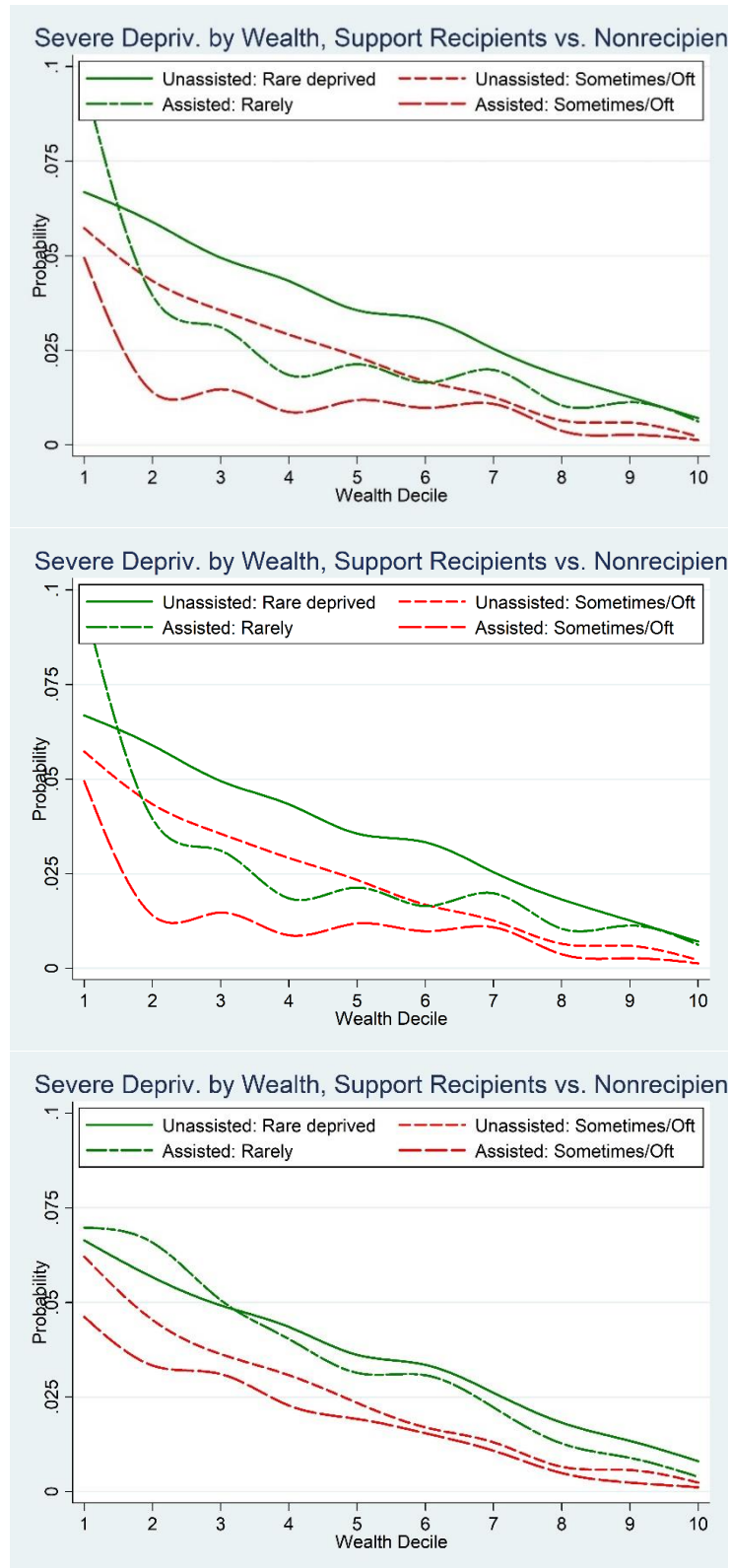
	Was there ever no food to eat of any kind in your hshld.?				Did you worry that your hshld. would not have food?				Are you satisfied with your current job?			
	Model 1		Model 2		Model 1		Model 2		Model 1		Model 2	
	Rarely	Sometimes/oft	Rarely	Sometimes/oft	Rarely	Sometimes/oft	Rarely	Sometimes/oft	Not	Rather	Not	Rather
	(0.923)	(1.239)	(0.920)	(1.241)	(1.042)	(0.786)	(1.042)	(0.789)	(0.242)	(0.172)	(0.240)	(0.173)
Ismailia	1.403**	0.684	1.409**	0.709	0.451	1.893***	0.556*	1.996***	-0.741***	-0.351*	-0.671*	-0.311*
	(0.673)	(0.836)	(0.674)	(0.838)	(0.316)	(0.315)	(0.314)	(0.323)	(0.287)	(0.185)	(0.288)	(0.185)
Giza	1.046	0.025	1.056	0.014	-0.482	-0.235	-0.489	-0.198	1.268***	1.057***	1.284***	1.058**
	(0.880)	(0.955)	(0.880)	(0.958)	(0.416)	(0.413)	(0.411)	(0.419)	(0.269)	(0.200)	(0.268)	(0.199)
Beni-Suef	1.097*	1.039	1.158*	1.051	-0.652*	-0.535	-0.868**	-0.588	0.236	0.563***	0.240	0.539**
	(0.665)	(0.762)	(0.662)	(0.768)	(0.333)	(0.364)	(0.347)	(0.371)	(0.267)	(0.178)	(0.268)	(0.179)
Fayoum	2.221***	1.747**	2.279***	1.790**	0.873***	1.068***	0.809***	0.962***	-0.396	0.092	-0.314	0.116
	(0.635)	(0.788)	(0.629)	(0.790)	(0.294)	(0.340)	(0.292)	(0.345)	(0.281)	(0.187)	(0.283)	(0.191)
Menia	1.689**	1.694**	1.709***	1.635**	0.124	1.385***	-0.025	1.294***	-0.101	0.116	-0.196	0.062
	(0.657)	(0.754)	(0.659)	(0.754)	(0.328)	(0.315)	(0.335)	(0.320)	(0.270)	(0.173)	(0.270)	(0.174)
Asyout	1.515**	1.400*	1.539**	1.382*	0.673**	0.645*	0.586*	0.621*	-0.015	0.112	-0.064	0.072
	(0.652)	(0.817)	(0.649)	(0.824)	(0.320)	(0.330)	(0.324)	(0.337)	(0.281)	(0.175)	(0.282)	(0.176)
Suhag	1.786***	1.721**	1.897***	1.843**	0.117	0.486	-0.095	0.429	0.861***	0.574***	0.880***	0.569**
	(0.662)	(0.753)	(0.657)	(0.757)	(0.319)	(0.335)	(0.322)	(0.342)	(0.243)	(0.176)	(0.242)	(0.178)
Qena	2.426***	1.946**	2.496***	1.985***	1.280***	2.261***	1.135***	2.176***	0.926***	-0.026	0.902***	-0.040
	(0.628)	(0.764)	(0.625)	(0.768)	(0.297)	(0.311)	(0.296)	(0.317)	(0.247)	(0.185)	(0.245)	(0.186)
Aswan	0.124	0.448	0.058	0.408	-0.799*	-0.580	-0.744	-0.494	0.930***	-0.147	0.918***	-0.141
	(0.842)	(0.840)	(0.844)	(0.837)	(0.472)	(0.420)	(0.475)	(0.430)	(0.251)	(0.202)	(0.253)	(0.202)
Luxur	-21.524**	-21.477***	-21.451***	-21.428***	0.390	1.033	0.143	0.955	0.217	-0.370	0.119	-0.420
	(0.633)	(0.748)	(0.633)	(0.760)	(0.653)	(0.631)	(0.681)	(0.649)	(0.470)	(0.367)	(0.473)	(0.369)



**Table A.5.** Descriptive statistics of socioeconomic outcomes by workers' reported perceptions.

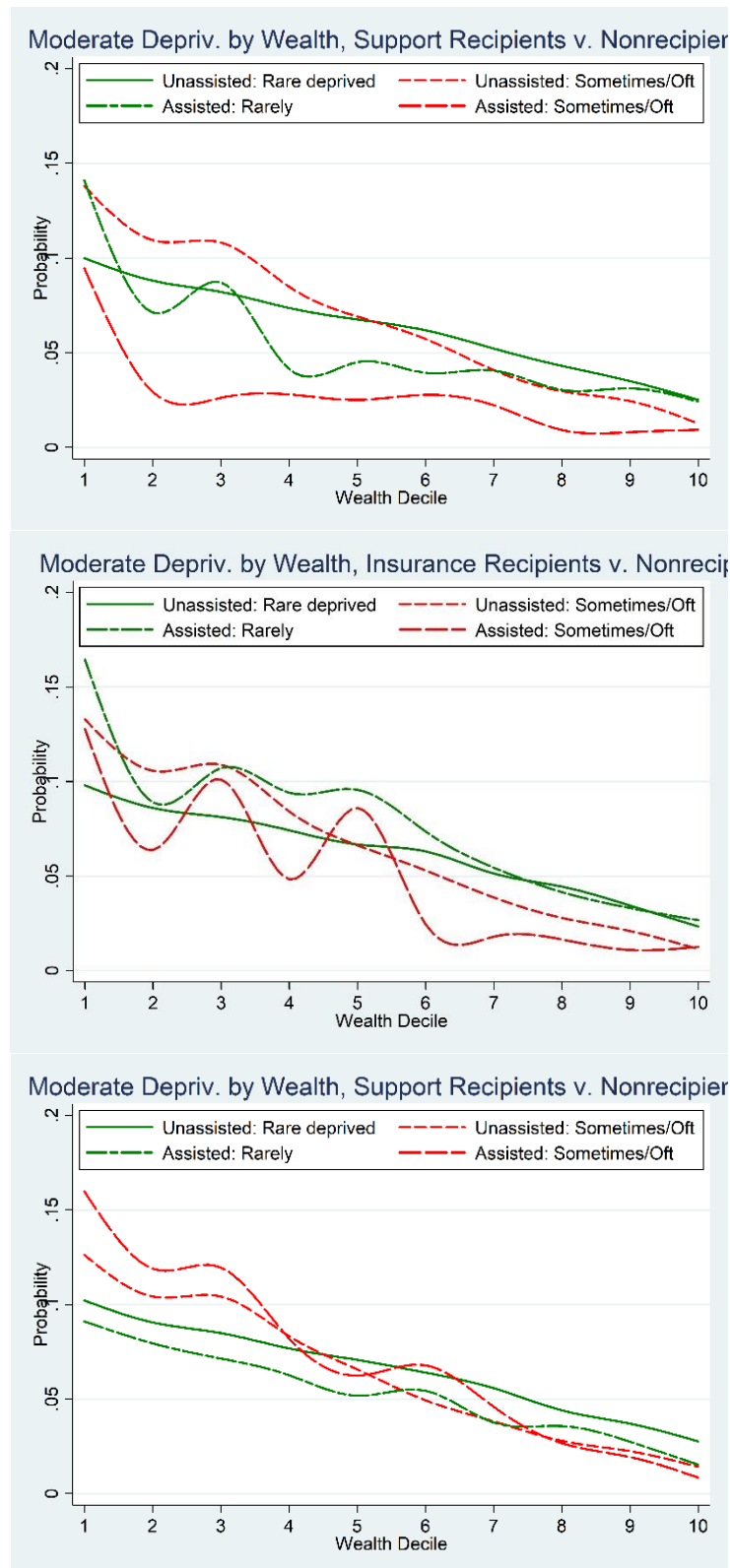
<i>Did you worry about food?</i>	Never	Rarely	Sometimes/Often
Intermediate edu.	0.365 (0.482)	0.335 (0.472)	0.335 (0.472)
Above intermediate edu.	0.273 (0.445)	0.136 (0.344)	0.078 (0.268)
Female	0.210 (0.407)	0.175 (0.380)	0.144 (0.352)
Urban	0.439 (0.496)	0.356 (0.479)	0.309 (0.462)
Wealth score '12	0.068 (0.885)	-0.269 (0.704)	-0.419 (0.717)
Wealth score '18	0.121 (1.008)	-0.340 (0.686)	-0.482 (0.607)
Monthly wage (all jobs) '12	1,131 (1,199)	911 (645)	988 (1,104)
Monthly wage (all jobs) '18	3,031 (7,856)	2,313 (3,113)	2,176 (3,523)
<i>Was there ever no food?</i>	Never	Rarely	Sometimes/Often
Intermediate edu.	0.365 (0.481)	0.356 (0.479)	0.247 (0.432)
Above intermediate edu.	0.259 (0.438)	0.086 (0.280)	0.089 (0.285)
Female	0.204 (0.403)	0.164 (0.371)	0.164 (0.370)
Urban	0.434 (0.496)	0.308 (0.462)	0.250 (0.434)
Wealth score '12	0.035 (0.879)	-0.398 (0.723)	-0.422 (0.658)
Wealth score '18	0.078 (0.995)	-0.437 (0.575)	-0.544 (0.536)
Monthly wage (all jobs) '12	1,118 (1,187)	970 (854)	884 (765)
Monthly wage (all jobs) '18	2,892 (5,887)	3,984 (22,740)	1,848 (1,399)
<i>How satisfied with your job?</i>	Fully satisfied	Rather satisfied	Non-satisfied
Intermediate edu.	0.345 (0.475)	0.380 (0.485)	0.352 (0.478)
Above intermediate edu.	0.387 (0.487)	0.194 (0.396)	0.121 (0.326)
Female	0.219 (0.413)	0.110 (0.313)	0.321 (0.467)
Urban	0.485 (0.500)	0.391 (0.488)	0.378 (0.485)
Wealth score '12	0.257 (0.951)	-0.097 (0.779)	-0.218 (0.805)
Wealth score '18	0.376 (1.127)	-0.092 (0.854)	-0.266 (0.766)
Monthly wage (all jobs) '12	1,267 (1,408)	1,024 (986)	946 (891)
Monthly wage (all jobs) '18	3,300 (4,752)	2,813 (9,841)	2,065 (2,790)

Notes: Authors' calculations based on ELMPS 2012 & 2018. Samples weighted using individual-level weights.



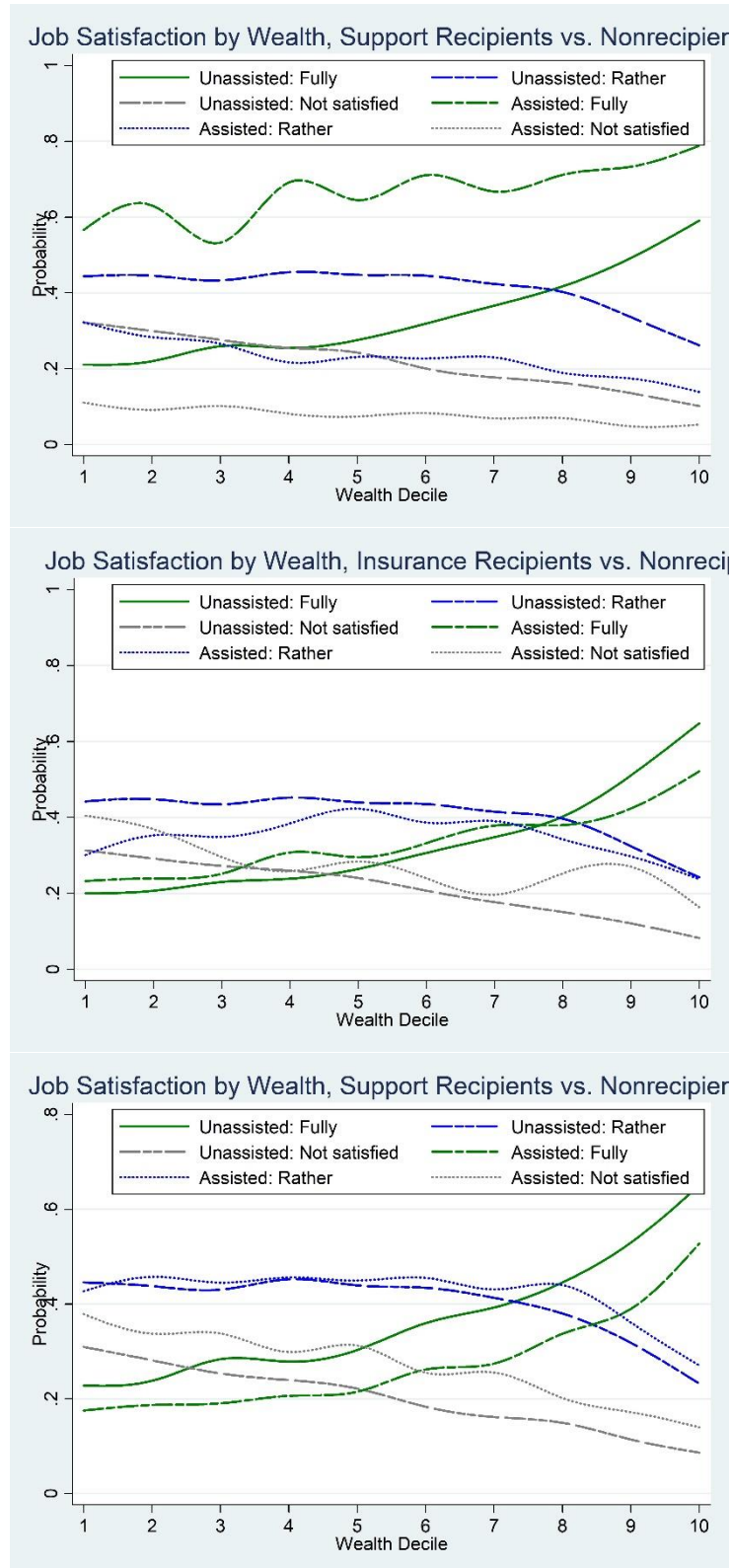
**Fig. A.1.** “In the past 4 weeks, was there ever no food to eat of any kind in your household?”. Predicted probability of degree of food deprivation, by wealth decile. (i) Public Vocational Training Recipients vs. Not. (ii) Public Health Insurance Beneficiaries vs. Not. (iii) Public Financial Assistance Recipients vs. Not. Notes: Authors’ calculations

based on ELMPS 2012 & 2018. Predicted probabilities from Model 2. Model 1 results near identical.

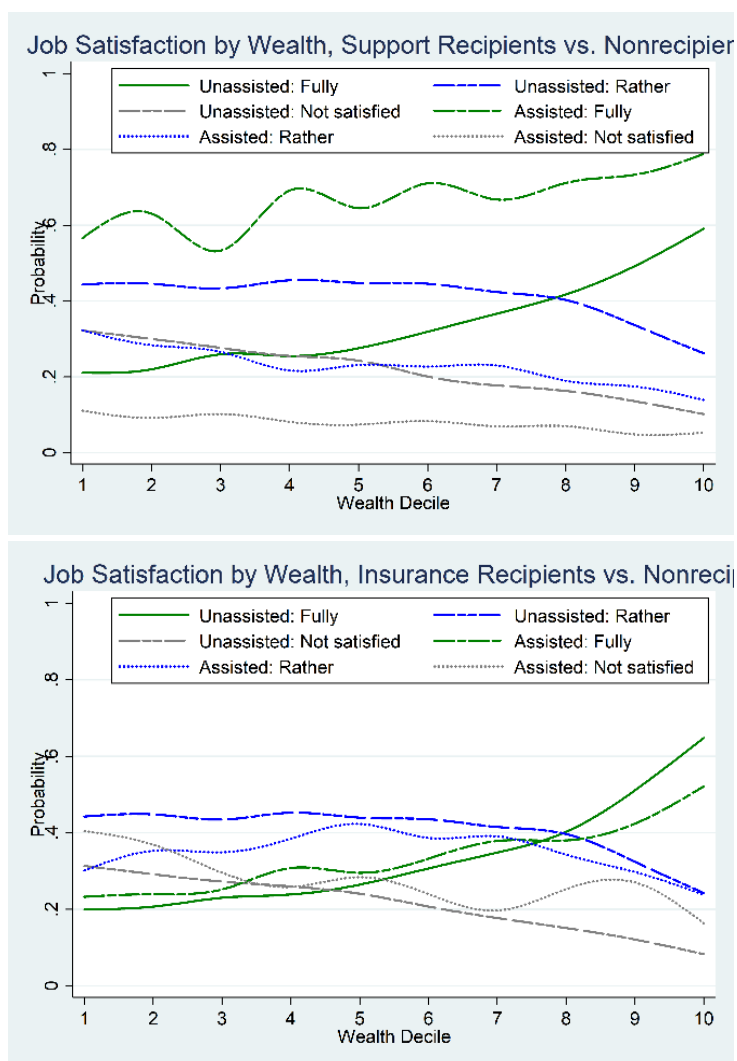


**Fig. A.2.** “In the past 4 weeks, did you worry that your household would not have any food?” Predicted probability of degree of food deprivation, by wealth decile. (i) Public

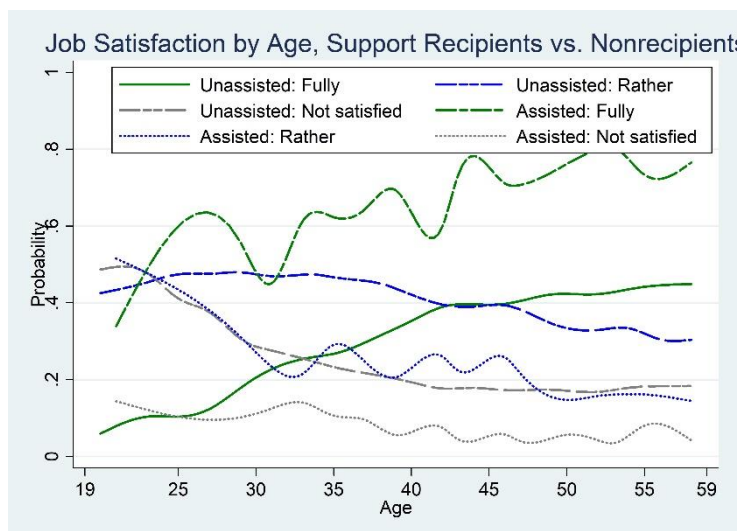
Vocational Training Recipients vs. Not. (ii) Public Health Insurance Beneficiaries vs. Not. (iii) Public Financial Assistance Recipients vs. Not. Notes: Authors' calculations based on ELMPS 2012 & 2018. Predicted probabilities from Model 2. Model 1 results near identical.



**Fig. A.3.** “How satisfied are you with your current job?” Predicted probability of degree of satisfaction, by wealth decile. (i) Public Vocational Training Recipients vs. Not. (ii) Public Health Insurance Beneficiaries vs. Not. (iii) Public Financial Assistance Recipients vs. Not. Notes: Authors’ calculations based on ELMPS 2012 & 2018. Predicted probabilities from Model 2. Model 1 results near identical.



**Fig. A.4.** “In the past 4 weeks, was there ever no food to eat of any kind in your household?” Predicted probability of degree of food deprivation, 2012 public vocational training recipients vs. not, by age. (i) In the past 4 weeks, was there ever no food to eat of any kind in your household? (ii) In the past 4 weeks, did you worry that your household would not have any food? Notes: Authors’ calculations based on ELMPS 2012 & 2018. Predicted probabilities from Model 2. Model 1 results near identical.



**Fig. A.5.** “How satisfied are you with your current job?” Predicted probability of degree of satisfaction, 2012 public vocational training recipients vs. not, by age. Notes: Authors’ calculations based on ELMPS 2012 & 2018. Predicted probabilities from Model 2. Model 1 results near identical.



AIMS Press

© 2023 the Author(s), licensee AIMS Press. This is an open access article distributed under the terms of the Creative Commons Attribution License (<http://creativecommons.org/licenses/by/4.0>)