



*Research article*

## **Epidemiology of coronavirus disease 2019 (COVID-19) in Japan during the first and second waves**

**Ryo Kinoshita<sup>1,2</sup>, Sung-mok Jung<sup>1,3</sup>, Tetsuro Kobayashi<sup>1</sup>, Andrei R. Akhmetzhanov<sup>4</sup> and Hiroshi Nishiura<sup>1,\*</sup>**

<sup>1</sup> School of Public Health, Kyoto University, Kyoto, Japan

<sup>2</sup> National Institute of Infectious Diseases, Center of Surveillance Immunization and Epidemiologic Research, Tokyo, Japan

<sup>3</sup> Graduate School of Medicine, Hokkaido University, Sapporo, Japan

<sup>4</sup> College of Public Health, National Taiwan University, Taipei, Taiwan

\* **Correspondence:** Email: [nishiura.hiroshi.5r@kyoto-u.ac.jp](mailto:nishiura.hiroshi.5r@kyoto-u.ac.jp); Tel: +810757534456; Fax: +810757534458.

---

## **Supplementary**

**Table S1.** COVID-19 cases by age group (in decades) during the first and second waves in Japan.

| Age group | 1 <sup>st</sup> wave |       | 2 <sup>nd</sup> wave |       |
|-----------|----------------------|-------|----------------------|-------|
|           | (Jan-May 2020)       |       | (Jun-Oct 2020)       |       |
| 0         | 281                  | 1.5%  | 2141                 | 2.4%  |
| 10        | 387                  | 2.0%  | 4827                 | 5.5%  |
| 20        | 2693                 | 14.2% | 24189                | 27.5% |
| 30        | 2478                 | 13.1% | 14482                | 16.5% |
| 40        | 2614                 | 13.8% | 11515                | 13.1% |
| 50        | 2741                 | 14.5% | 9759                 | 11.1% |
| 60        | 1869                 | 9.9%  | 5938                 | 6.8%  |
| 70        | 1670                 | 8.8%  | 4842                 | 5.5%  |
| < 80      | 1775                 | 9.4%  | 4278                 | 4.9%  |
| NA        | 2444                 | 12.9% | 5895                 | 6.7%  |
| Total     | 18946                |       | 87866                |       |

NA, not available.

**Table S2.**  $R_t$  in Hokkaido and all of Japan by calendar period.

| <b>Hokkaido</b>     | $R_t$ | Lower 95% CI | Upper 95% CI |
|---------------------|-------|--------------|--------------|
| 1/19-2/7            | 1.65  | 0.84         | 2.86         |
| 2/8-2/27            | 1.23  | 1.02         | 1.46         |
| 2/28-3/18           | 0.70  | 0.52         | 0.91         |
| 3/19-4/7            | 1.86  | 1.66         | 2.13         |
| <b>Entire Japan</b> |       |              |              |
| 3/8-4/6             | 1.29  | 1.26         | 1.31         |
| 4/7-5/6             | 0.68  | 0.66         | 0.70         |
| 5/7-6/5             | 0.95  | 0.90         | 1.00         |
| 6/6-7/5             | 1.35  | 1.31         | 1.38         |

CI, confidence interval

**Table S3.** Risks of severe symptoms or death by age group (in decades) during the first and second waves in Japan.

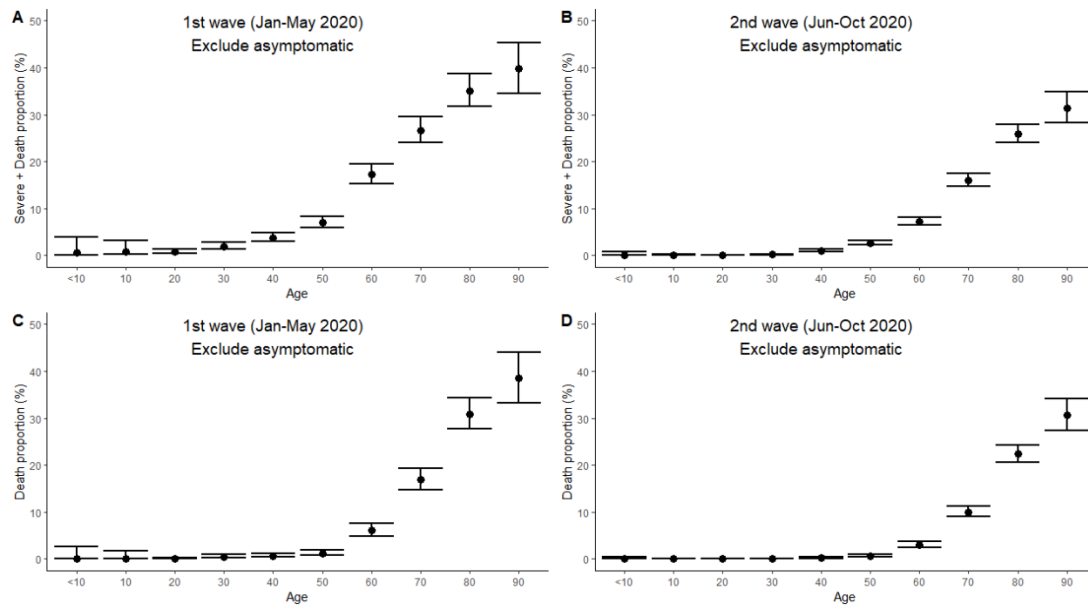
|             |            | Severe + Death       |                  |                  |  |                      |                  |                  |  |
|-------------|------------|----------------------|------------------|------------------|--|----------------------|------------------|------------------|--|
| First wave  | Age decade | Include asymptomatic |                  |                  |  | Exclude asymptomatic |                  |                  |  |
|             |            | Point estimate (%)   | Lower 95% CI (%) | Upper 95% CI (%) |  | Point estimate (%)   | Lower 95% CI (%) | Upper 95% CI (%) |  |
| First wave  | < 10       | 0.45                 | 0.02             | 2.53             |  | 0.70                 | 0.04             | 3.88             |  |
|             | 10         | 0.63                 | 0.17             | 2.26             |  | 0.90                 | 0.25             | 3.21             |  |
|             | 20         | 0.66                 | 0.38             | 1.15             |  | 0.83                 | 0.47             | 1.44             |  |
|             | 30         | 1.56                 | 1.06             | 2.30             |  | 1.93                 | 1.31             | 2.83             |  |
|             | 40         | 3.19                 | 2.48             | 4.09             |  | 3.81                 | 2.97             | 4.89             |  |
|             | 50         | 5.96                 | 4.99             | 7.09             |  | 6.99                 | 5.86             | 8.31             |  |
|             | 60         | 15.04                | 13.23            | 17.05            |  | 17.29                | 15.23            | 19.57            |  |
|             | 70         | 23.48                | 21.12            | 26.01            |  | 26.71                | 24.07            | 29.52            |  |
|             | 80         | 31.09                | 28.04            | 34.32            |  | 35.14                | 31.78            | 38.66            |  |
|             | 90         | 36.07                | 31.15            | 41.30            |  | 39.81                | 34.51            | 45.36            |  |
| Second wave | < 10       | 0.05                 | 0.00             | 0.26             |  | 0.13                 | 0.01             | 0.73             |  |
|             | 10         | 0.02                 | 0.00             | 0.12             |  | 0.04                 | 0.00             | 0.21             |  |
|             | 20         | 0.03                 | 0.01             | 0.06             |  | 0.06                 | 0.03             | 0.12             |  |
|             | 30         | 0.09                 | 0.05             | 0.15             |  | 0.19                 | 0.11             | 0.33             |  |
|             | 40         | 0.50                 | 0.39             | 0.65             |  | 1.02                 | 0.79             | 1.31             |  |
|             | 50         | 1.43                 | 1.22             | 1.68             |  | 2.66                 | 2.27             | 3.12             |  |
|             | 60         | 3.97                 | 3.51             | 4.48             |  | 7.30                 | 6.47             | 8.23             |  |
|             | 70         | 9.36                 | 8.59             | 10.19            |  | 16.10                | 14.82            | 17.47            |  |
|             | 80         | 15.66                | 14.47            | 16.94            |  | 25.96                | 24.09            | 27.91            |  |
|             | 90         | 19.02                | 16.91            | 21.31            |  | 31.48                | 28.23            | 34.92            |  |

CI, confidence interval.

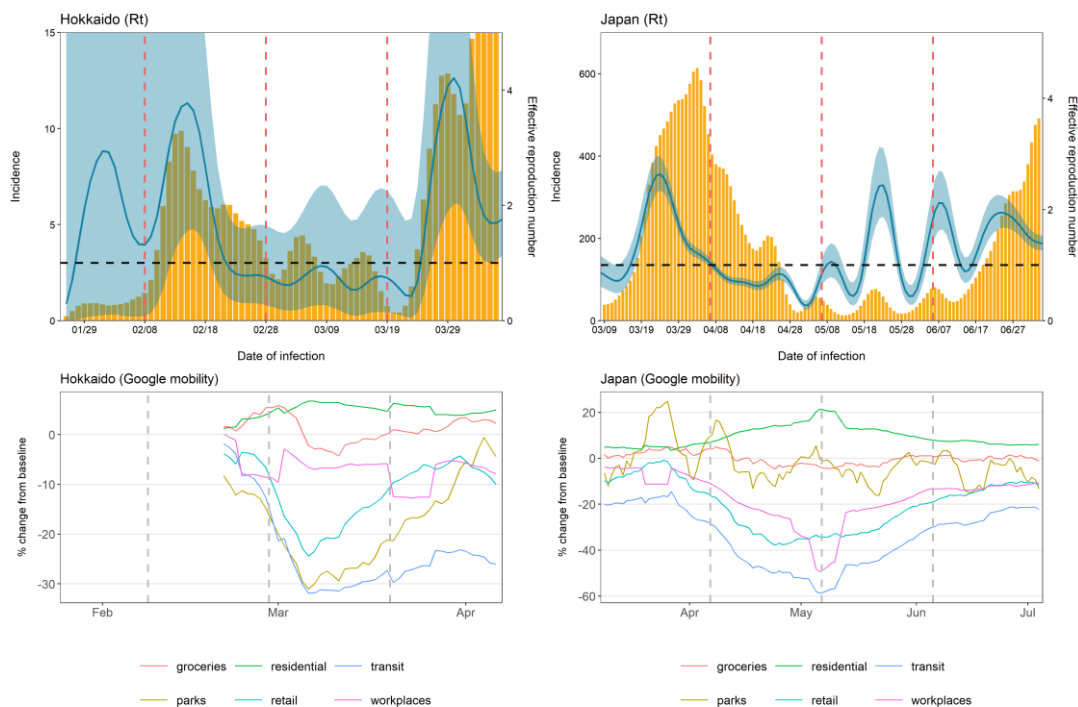
**Table S4.** Case fatality risk (cCFR) by age group (in decades) during the first and second waves in Japan.

|             |            | cCFR (Death)         |                  |                  |                      |                  |                  |                    |                  |
|-------------|------------|----------------------|------------------|------------------|----------------------|------------------|------------------|--------------------|------------------|
| First wave  | Age decade | Include asymptomatic |                  |                  | Exclude asymptomatic |                  |                  |                    |                  |
|             |            | Point estimate (%)   | Lower 95% CI (%) | Upper 95% CI (%) | Point estimate (%)   | Lower 95% CI (%) | Upper 95% CI (%) | Point estimate (%) | Upper 95% CI (%) |
| First wave  | < 10       | 0.00                 | 0.00             | 1.72             | 0.00                 | 0.00             | 2.63             |                    |                  |
|             | 10         | 0.00                 | 0.00             | 1.19             | 0.00                 | 0.00             | 1.69             |                    |                  |
|             | 20         | 0.00                 | 0.00             | 0.21             | 0.00                 | 0.00             | 0.26             |                    |                  |
|             | 30         | 0.38                 | 0.17             | 0.82             | 0.46                 | 0.21             | 1.01             |                    |                  |
|             | 40         | 0.59                 | 0.33             | 1.06             | 0.71                 | 0.40             | 1.27             |                    |                  |
|             | 50         | 1.02                 | 0.66             | 1.57             | 1.19                 | 0.77             | 1.84             |                    |                  |
|             | 60         | 5.29                 | 4.21             | 6.62             | 6.08                 | 4.85             | 7.60             |                    |                  |
|             | 70         | 14.87                | 12.93            | 17.04            | 16.91                | 14.73            | 19.35            |                    |                  |
|             | 80         | 27.37                | 24.45            | 30.50            | 30.94                | 27.71            | 34.37            |                    |                  |
|             | 90         | 34.90                | 30.03            | 40.10            | 38.51                | 33.26            | 44.05            |                    |                  |
| Second wave | < 10       | 0.00                 | 0.00             | 0.18             | 0.00                 | 0.00             | 0.49             |                    |                  |
|             | 10         | 0.00                 | 0.00             | 0.08             | 0.00                 | 0.00             | 0.14             |                    |                  |
|             | 20         | 0.01                 | 0.00             | 0.03             | 0.02                 | 0.00             | 0.06             |                    |                  |
|             | 30         | 0.01                 | 0.00             | 0.05             | 0.03                 | 0.01             | 0.11             |                    |                  |
|             | 40         | 0.12                 | 0.07             | 0.20             | 0.24                 | 0.14             | 0.40             |                    |                  |
|             | 50         | 0.37                 | 0.27             | 0.51             | 0.69                 | 0.50             | 0.95             |                    |                  |
|             | 60         | 1.66                 | 1.37             | 2.01             | 3.06                 | 2.53             | 3.70             |                    |                  |
|             | 70         | 5.84                 | 5.23             | 6.52             | 10.05                | 9.01             | 11.18            |                    |                  |
|             | 80         | 13.51                | 12.39            | 14.71            | 22.38                | 20.62            | 24.25            |                    |                  |
|             | 90         | 18.52                | 16.44            | 20.80            | 30.66                | 27.44            | 34.09            |                    |                  |

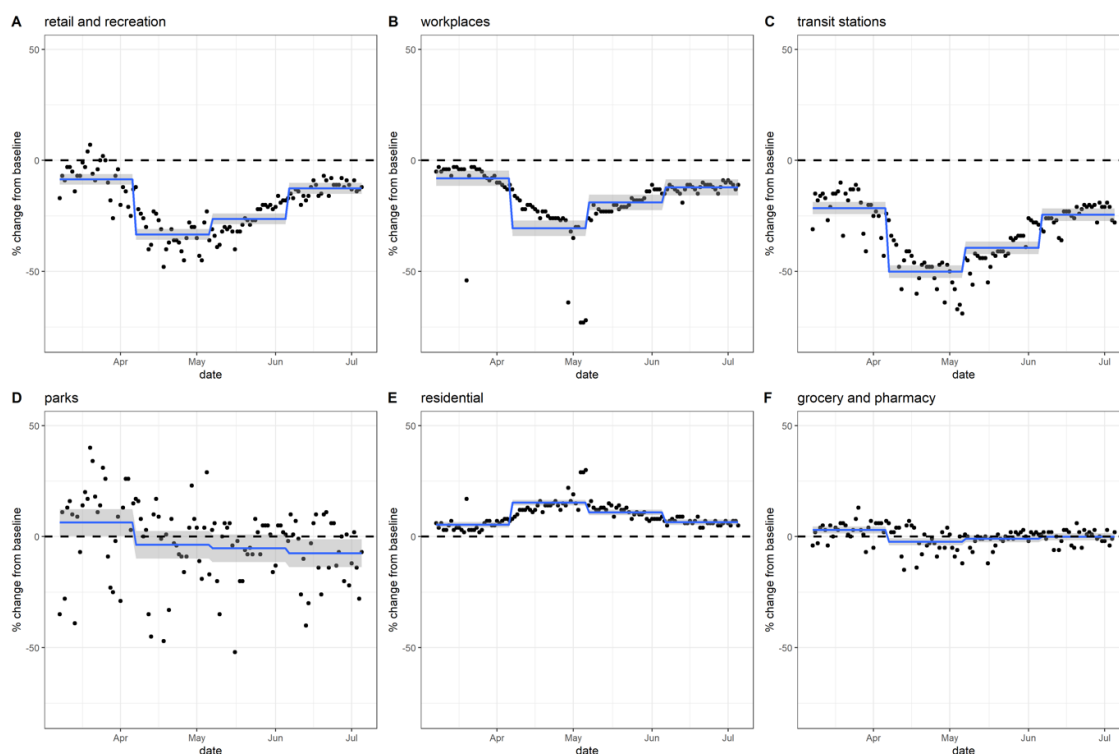
CFR, case fatality risk; CI, confidence interval.



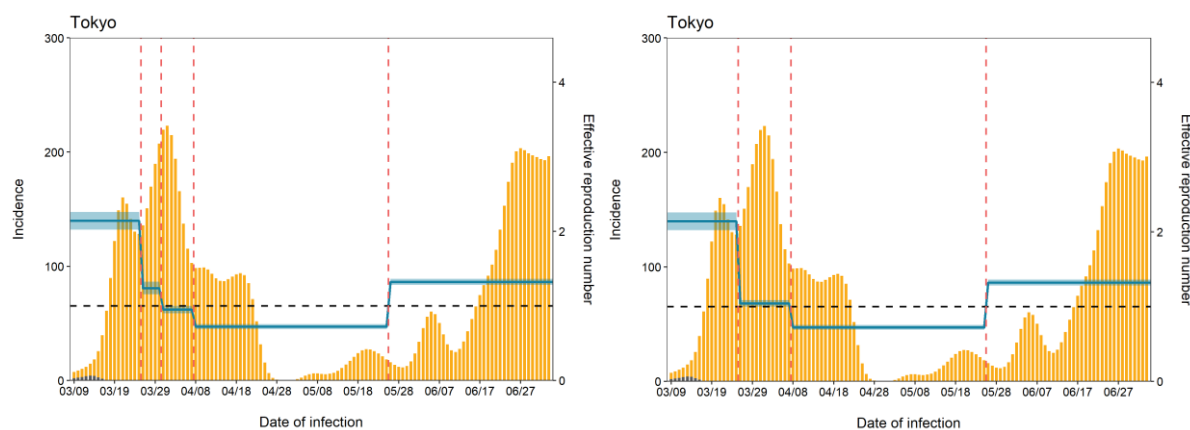
**Figure S1.** Proportions of severe disease and death by age group, excluding asymptomatic individuals from the denominator. (A, B) Risk of severe symptoms and death during the first wave (A) and the second wave (B). (C, D) Risk of death ( $cCFR$ ) during the first wave (C) and the second wave (D). 95% CIs were calculated using the Wilson score intervals. Age was categorized in decades.



**Figure S2.** The effective reproduction number for COVID-19 in Japan based on Google mobility datasets. A 7-day moving average was taken. The vertical dotted lines represent the same periods as described in main text Figure 5. Note: groceries = groceries and pharmacies, residential = residential areas, transit = transit station, and retail = retail and recreational areas.



**Figure S3.** Google mobility data in Japan. A piecewise constant regression was taken over the same time periods as in main text Figure 5.



**Figure S4.** Event-based estimation of  $R_t$  in Tokyo. The vertical dotted line represents each event. 2020-03-25: The Tokyo governor requested residents to self-restrict going out on weekends. 2020-03-30: The Tokyo governor requested residents to self-restrict going to bars at night. 2020-04-07: A state of emergency was announced by the prime minister of Japan. 2020-05-25: The state of emergency was lifted.