



Research article

Comprehensive analysis to identify DNA damage response-related lncRNA pairs as a prognostic and therapeutic biomarker in gastric cancer

Yuan Yang^{1,2,3,†}, Lingshan Zhou^{4,†}, Xi Gou^{2,3,†}, Guozhi Wu^{1,2,3}, Ya Zheng^{2,3}, Min Liu^{2,3}, Zhaofeng Chen^{2,3}, Yuping Wang^{2,3}, Rui Ji^{2,3}, Qinghong Guo^{2,3,*} and Yongning Zhou^{2,3,*}

¹ The First Clinical Medical College, Lanzhou University, Lanzhou 730000, China

² Department of Gastroenterology, The First Hospital of Lanzhou University, Lanzhou 730000, China

³ Gansu Key Laboratory of Gastroenterology, Lanzhou University, Lanzhou 730000, China

⁴ Department of Geriatrics Ward 2, The First Hospital of Lanzhou University, Lanzhou 730000, China

* **Correspondence:** Email: zhouyn@lzu.edu.cn, guoza@sohu.com; Tel: +869318356872; Fax: +869318356872.

† These authors contributed equally to this article.

Supplementary

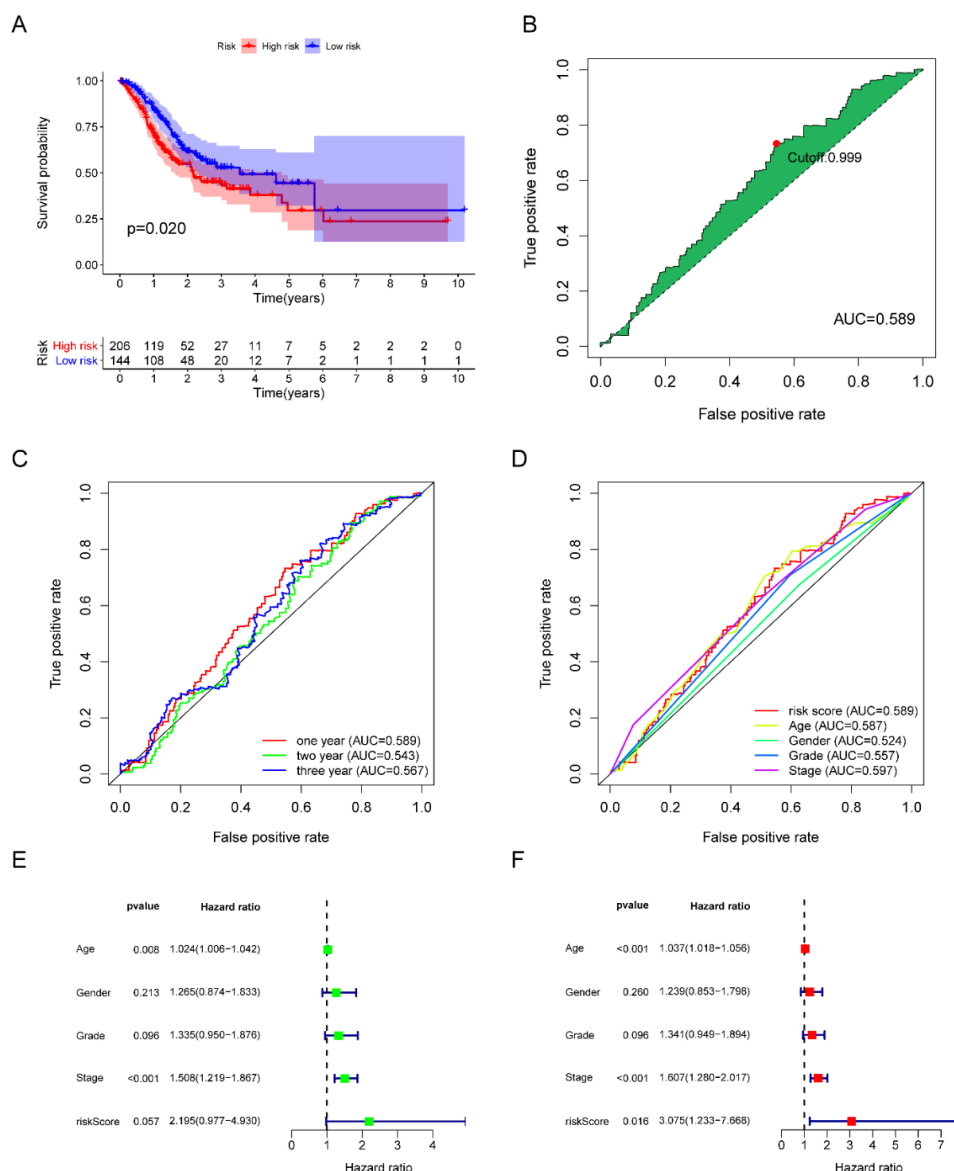


Figure S1. Evaluation of the performance of DDR model. (A) Kaplan–Meier survival analysis in the DDR model. (B) Identify the highest point of the AUC based on cut-off value. (C) The 1-, 2-, and 3-year ROC of the optimal model suggested that all AUC values were nearly 0.6. (D) Comparison ROC curves of the risk model with other clinical features. (E) Univariate Cox regression analyses illustrated the clinical features within the TCGA cohorts. (F) Multivariate Cox regression analyses illustrated the clinical features within the TCGA cohorts.



AIMS Press

©2022 the Author(s), licensee AIMS Press. This is an open access article distributed under the terms of the Creative Commons Attribution License (<http://creativecommons.org/licenses/by/4.0>)