



*Research article*

**MicroRNA expression profile and TNM staging system predict survival  
in patients with lung adenocarcinoma**

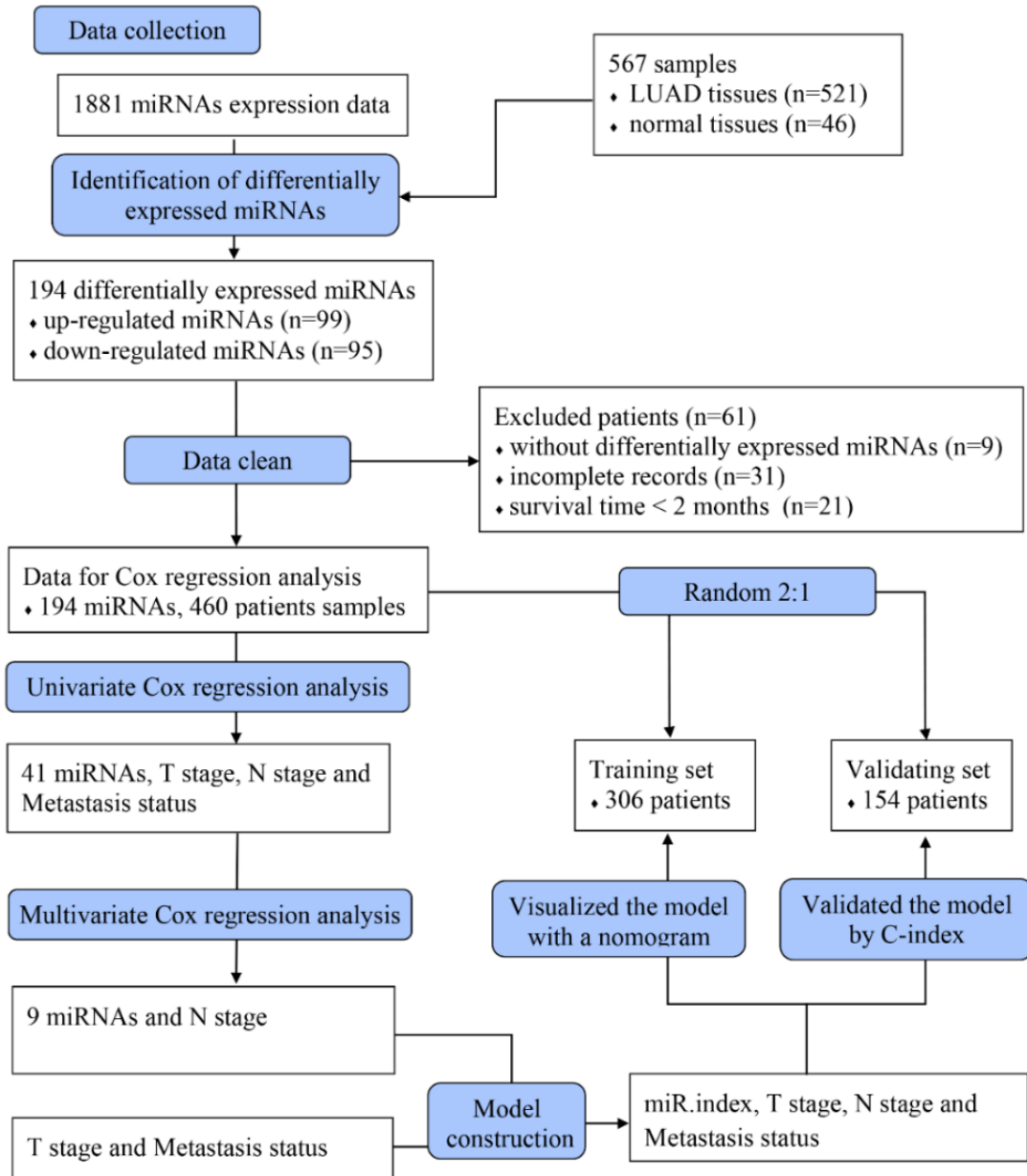
**Guohong Xin, Xiaoci Cao, Wujie Zhao, Pintian Lv, Gang Qiu, Yaxing Li, Bin Wang, Baoshuan Fang and Yitao Jia\***

Department of Oncology, Hebei Provincial Hospital, No. 348, West Heping Road, Shijiazhuang, Hebei 050051, China

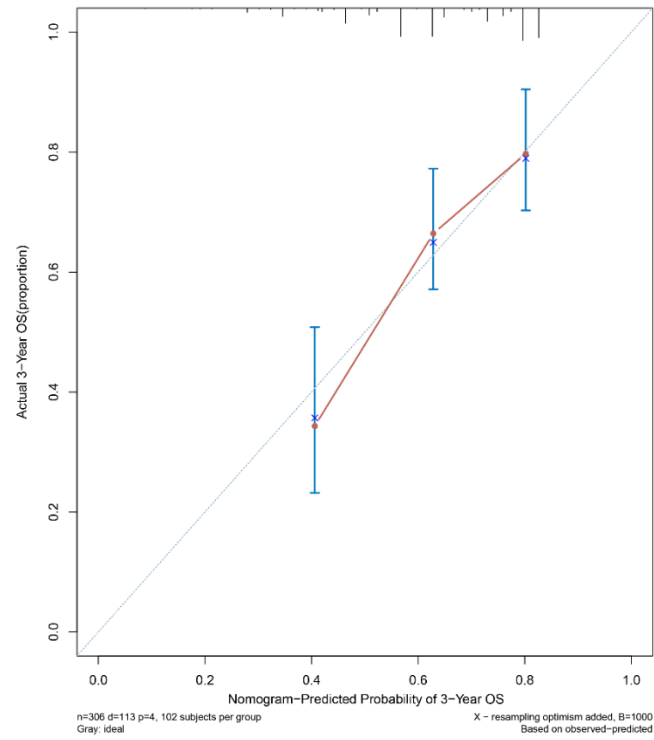
\* **Correspondence:** Email: [jiayitao99@163.com](mailto:jiayitao99@163.com); Tel: +86031185988367.

**Supplementary**

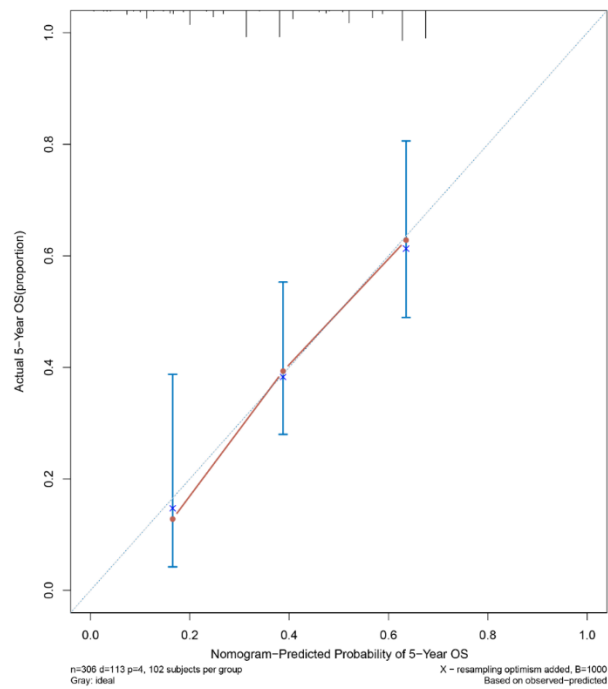
---



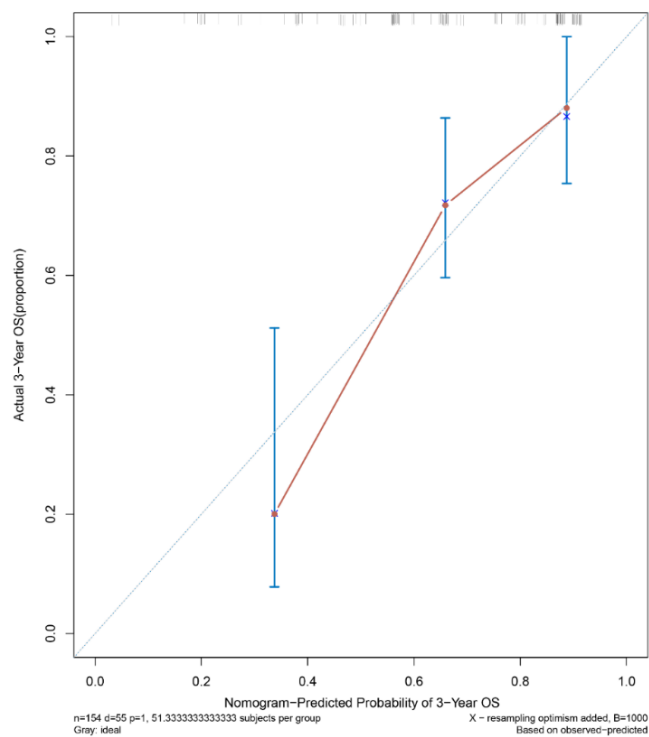
**Figure S1.** The Schematic flow diagram of the study design.



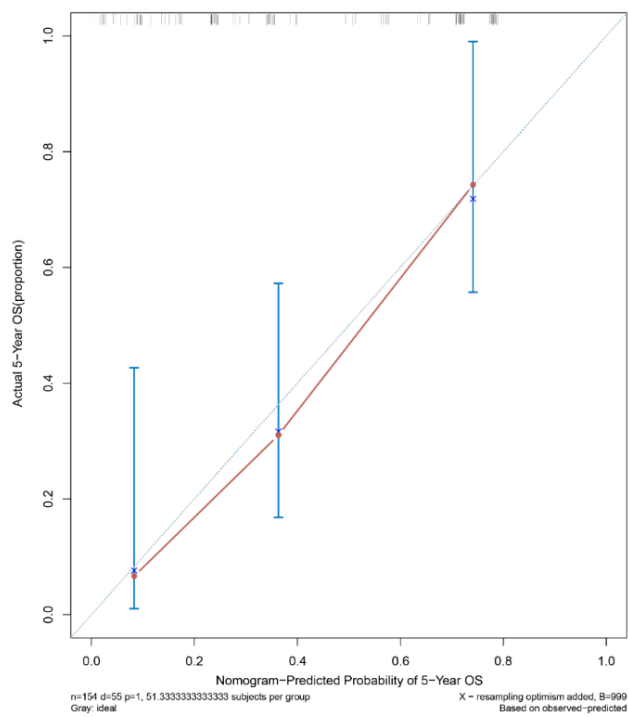
**Figure S2.** Model calibration tested for OS prediction at 3-year in model-constructing cohorts.



**Figure S3.** Model calibration tested for OS prediction at 5-year in model-constructing cohorts.



**Figure S4.** Model calibration tested for OS prediction at 3-year in validating cohorts.



**Figure S5.** Model calibration tested for OS prediction at 5-year in validating cohorts.

**Table S1.** clinicopathological characteristics of patients in the training set and validation set.

		Overall	Training set	Validation set	p
		460	306	154	
Sex (%)	Female	243 (52.8)	167 (54.6)	76 (49.4)	0.337
	Male	217 (47.2)	139 (45.4)	78 (50.6)	
age (%)	≤ 66(Median)	229 (49.8)	148 (48.4)	81 (52.6)	0.449
	> 66(Median)	231 (50.2)	158 (51.6)	73 (47.4)	
smoking_status (%)	Never Smokers	62 (13.9)	47 (15.9)	15 (10.0)	0.231
	Former Smokers	273 (61.2)	176 (59.5)	97 (64.7)	
	Current Smokers	111 (24.9)	73 (24.7)	38 (25.3)	
T (%)	T1	158 (34.3)	103 (33.7)	55 (35.7)	0.763
	T2	243 (52.8)	161 (52.6)	82 (53.2)	
	T3	42 (9.1)	31 (10.1)	11 (7.1)	
	T4	17 (3.7)	11 (3.6)	6 (3.9)	
N (%)	N0	303 (65.9)	202 (66.0)	101 (65.6)	0.969
	N1	90 (19.6)	60 (19.6)	30 (19.5)	
	N2	65 (14.1)	43 (14.1)	22 (14.3)	
	N3	2 (0.4)	1 (0.3)	1 (0.6)	
M (%)	M0	442 (96.1)	295 (96.4)	147 (95.5)	0.809
	M1	18 (3.9)	11 (3.6)	7 (4.5)	
Stage (%)	Stage I	248 (54.5)	160 (52.6)	88 (58.3)	0.402
	Stage II	112 (24.6)	82 (27.0)	30 (19.9)	
	Stage III	77 (16.9)	51 (16.8)	26 (17.2)	
	Stage IV	18 (4.0)	11 (3.6)	7 (4.6)	
stage_event.system_version (%)	3rd	3 (0.7)	2 (0.7)	1 (0.6)	0.561
	4th	5 (1.1)	4 (1.3)	1 (0.6)	
	5th	29 (6.3)	23 (7.5)	6 (3.9)	
	6th	161 (35.0)	109 (35.6)	52 (33.8)	
	7th	247 (53.7)	157 (51.3)	90 (58.4)	
	Not Available	15 (3.3)	11 (3.6)	4 (2.6)	
Cancer_Status (%)	Tumor Free	304 (74.5)	203 (75.5)	101 (72.7)	0.62
	With Tumor	104 (25.5)	66 (24.5)	38 (27.3)	
outcome (%)	CR	273 (72.8)	193 (77.8)	80 (63.0)	0.014
	PR	4 (1.1)	3 (1.2)	1 (0.8)	
	SD	29 (7.7)	14 (5.6)	15 (11.8)	
	PD	69 (18.4)	38 (15.3)	31 (24.4)	
POT (%)	No	140 (34.5)	88 (32.7)	52 (38.0)	0.347
	Yes	266 (65.5)	181 (67.3)	85 (62.0)	
RT (%)	No	56 (13.8)	30 (11.1)	26 (19.0)	0.043
	Yes	351 (86.2)	240 (88.9)	111 (81.0)	
miR.index (%)	Low	230 (50.0)	150 (49.0)	80 (51.9)	0.621
	High	230 (50.0)	156 (51.0)	74 (48.1)	

T, tumor; N, node; M, metastasis; CR, complete response; PR, partial response; SD, stable disease; PD, progressive disease; POT, postoperative treatment; RT, radiation therapy.