



Research article

The impact of an End-PJ-Paralysis quality improvement intervention in post-acute care: an interrupted time series analysis

Amelia Crabtree¹, Tyler J Lane², Lisa Mahon¹, Taryn Petch¹ and Christina L Ekegren^{2,3,4,5,*}

¹ Department of Rehabilitation and Aged Care, Caulfield Hospital – Alfred Health, 260 Kooyong Rd, Caulfield South, 3162, VIC, Australia

² School of Public Health and Preventive Medicine, Monash University, 553 St Kilda Rd, Melbourne 3004, VIC, Australia

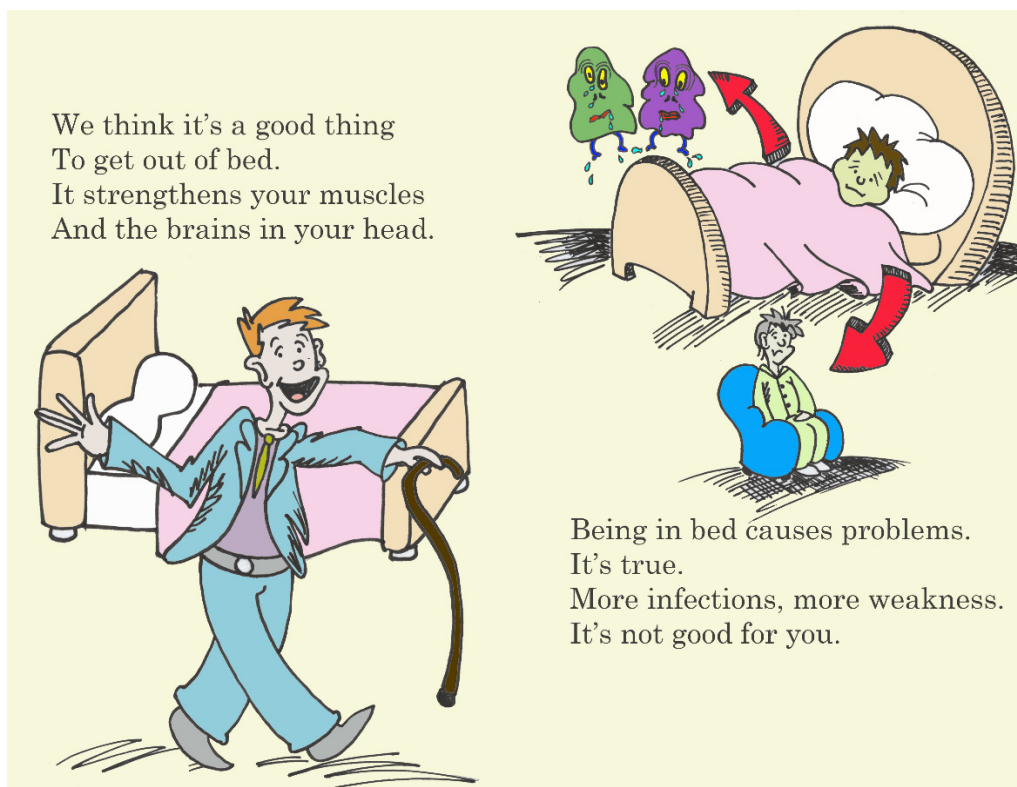
³ Rehabilitation, Ageing and Independent Living (RAIL) Research Centre, School of Primary and Allied Health Care, Monash University, Peninsula Campus, Frankston, 3199, VIC, Australia

⁴ The Alfred Hospital – Alfred Health, 55 Commercial Rd, Melbourne, 3004, VIC, Australia

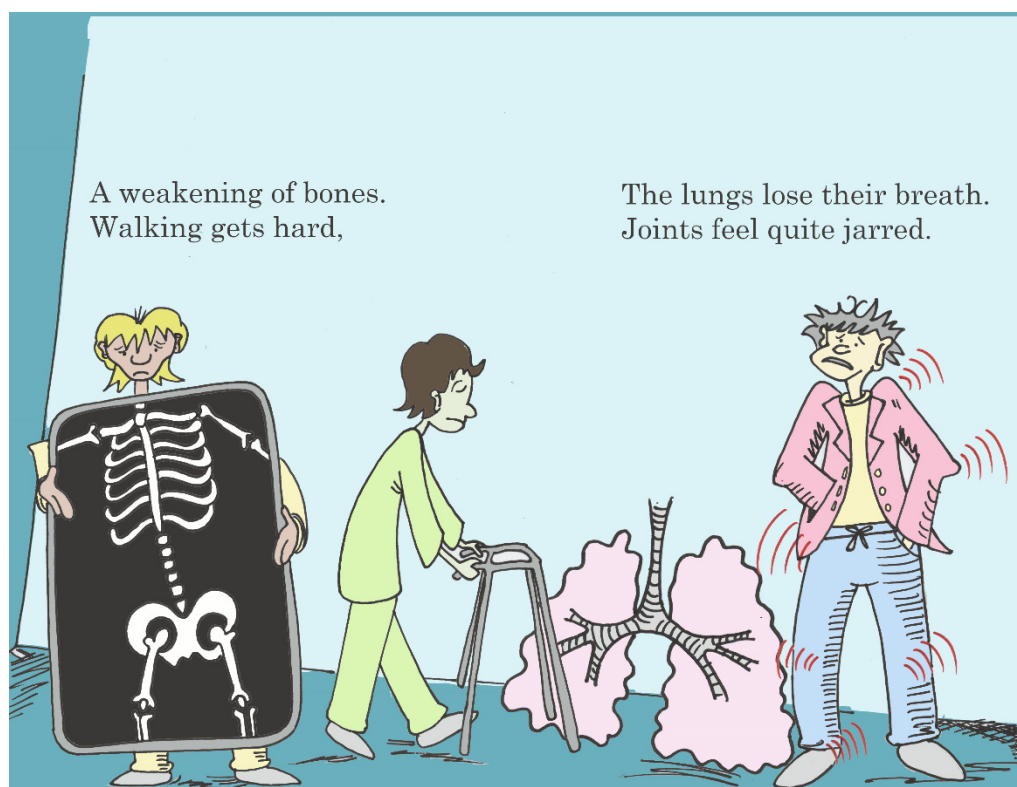
⁵ Baker Heart and Diabetes Institute, 75 Commercial Rd, Melbourne, 3004, VIC, Australia

* **Correspondence:** Email: christina.ekegren@monash.edu.au.

Supplementary

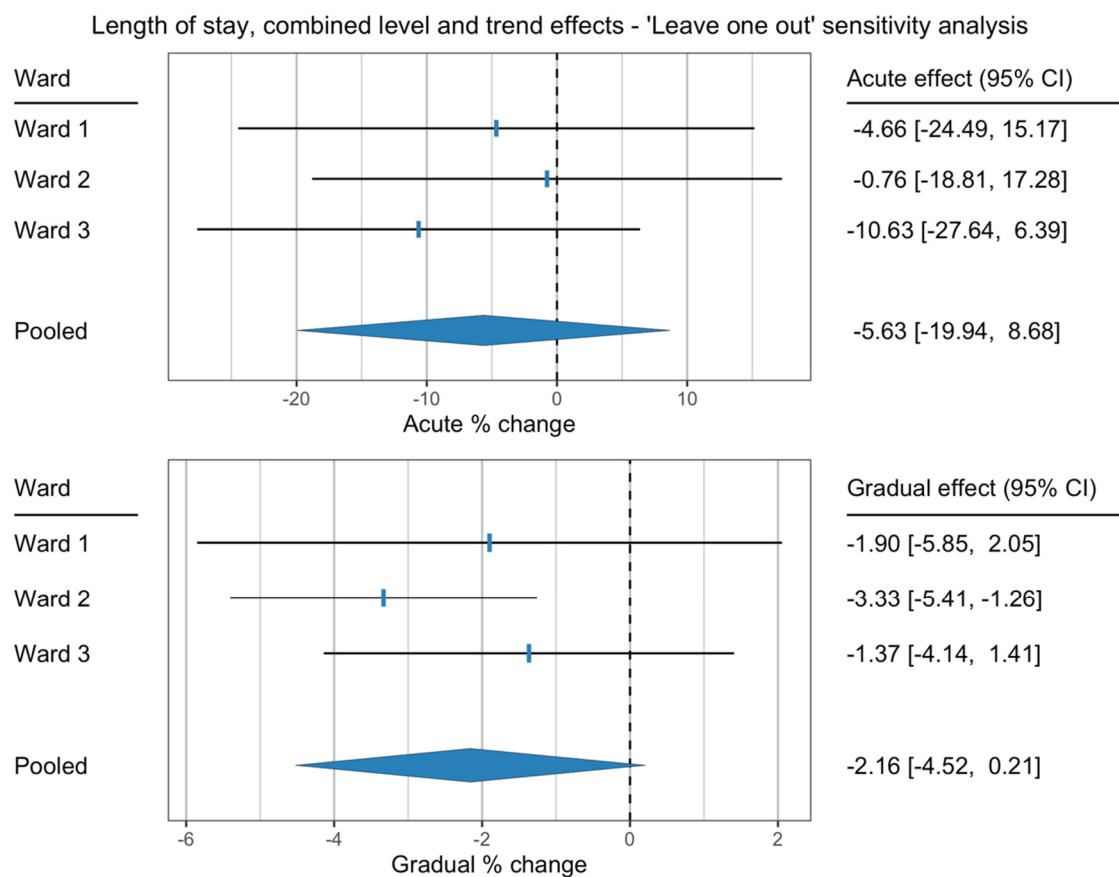


(A)

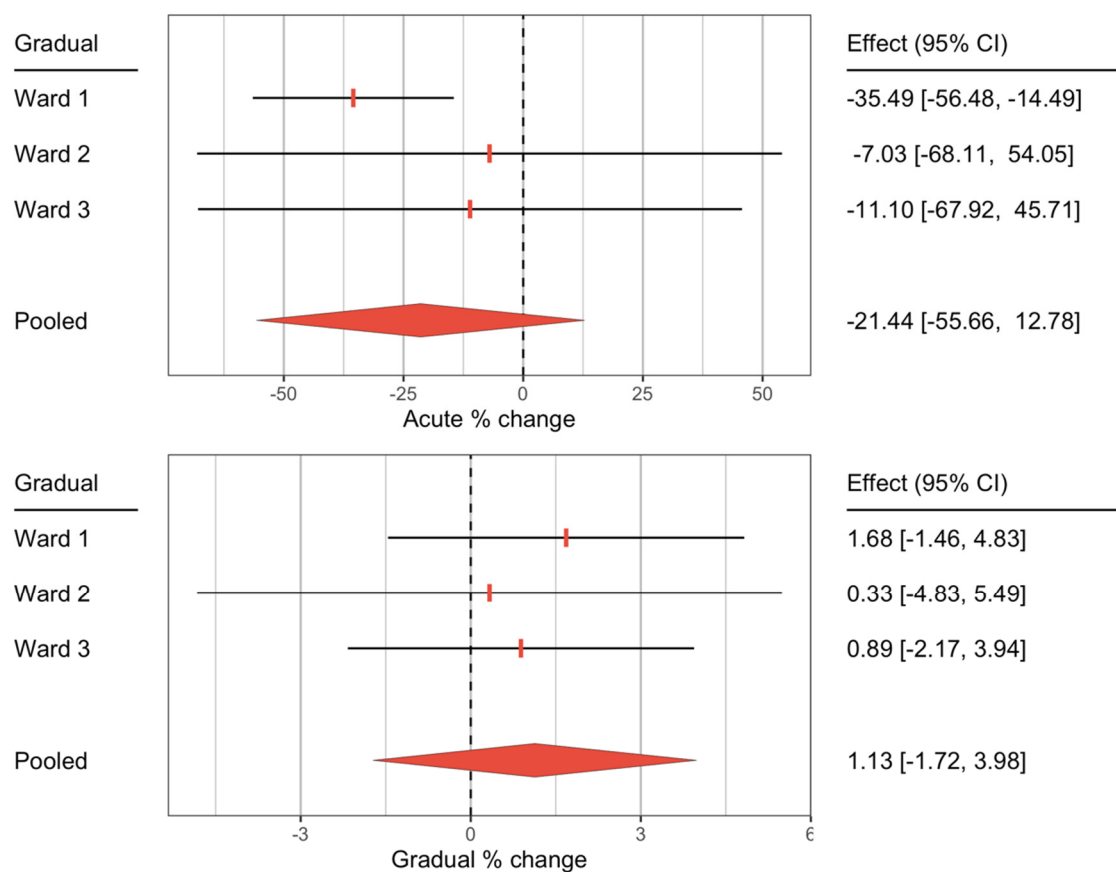


(B)

Supplementary Figure 1. Example of pages from educational booklet.



Supplementary Figure 2. Sensitivity “leave one out” meta-analyses on length of stay outcomes.



Supplementary Figure 3. Sensitivity “leave one out” meta-analyses on falls outcomes.



AIMS Press

© 2021 the Author(s), licensee AIMS Press. This is an open access article distributed under the terms of the Creative Commons Attribution License (<http://creativecommons.org/licenses/by/4.0>)