



Research article

Thermal and dielectric fingerprints of self-assembling elastin peptides derived from exon30

J. Dandurand^{1,*}, E. Dantras¹, C. Lacabanne¹, A. Pepe², B. Bochicchio² and V. Samouillan^{1,*}

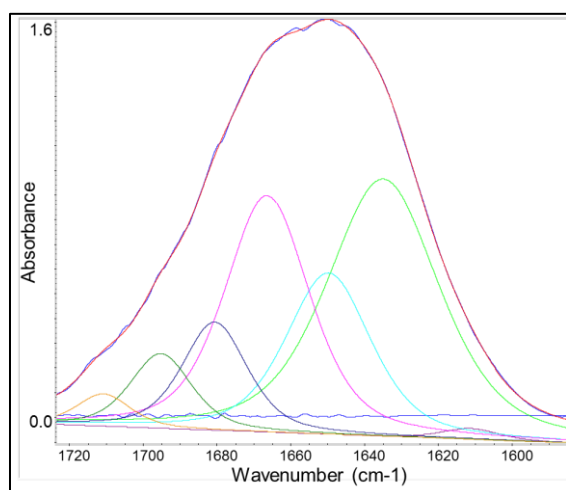
¹ CIRIMAT, Physique des Polymères, Université Paul Sabatier, 31062 Toulouse, France

² Laboratory of Bioinspired Materials, Università degli studi della Basilicata, 85000 Potenza, Italy

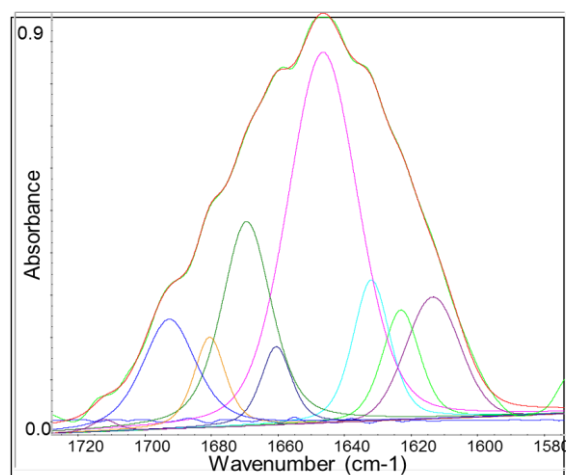
* **Correspondence:** Email: jany.lods@univ-tlse3.fr, valerie.samouillan@univ-tlse3.fr; Tel: +33561556165.

Appendix

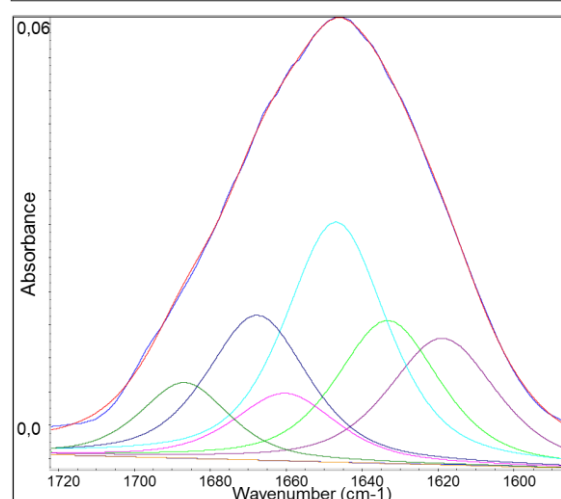
Supplementary material



S4		
assignment	cm ⁻¹	% area
Side chain or β -sheets	1619	17
β -sheets	1633	18
unordered, water	1647	30
helix	1660	8.5
PPII	1668	18
turns	1687	8.5



EX30-18		
assignment	cm ⁻¹	% area
side chain	1613	9
β -sheets	1623	6.5
β -sheets	1632	8.5
unordered, water	1647	40
turns, loops, helix	1661	4
PPII	1669	17
turns, loops	1681	5
β -sheets	1693	10



EX30-17		
assignment	cm ⁻¹	% area
side chains	1611	1
β -sheets	1635	38,5
unordered	1650	18,5
PPII	1667	26
Turns, loops	1681	9
anti// beta sheets	1695	7

Figure S1. Decomposition of Amide I and associated area.

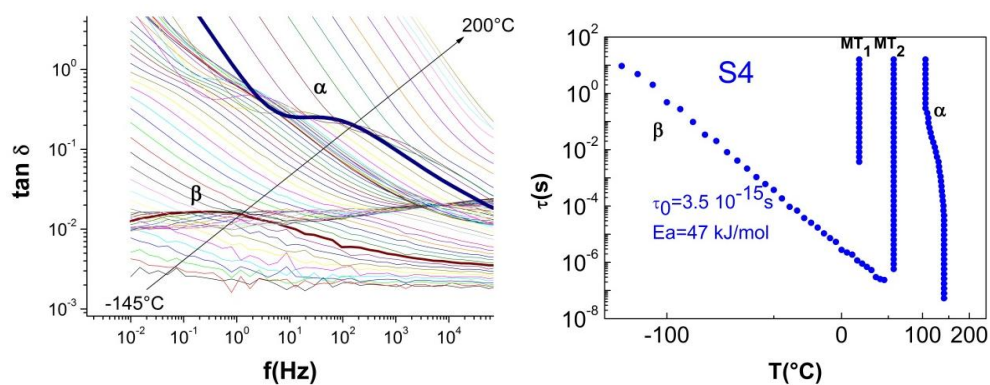


Figure S2. Dielectric losses of S4 peptide and temperature dependence of the relaxation times of the four relaxation modes.

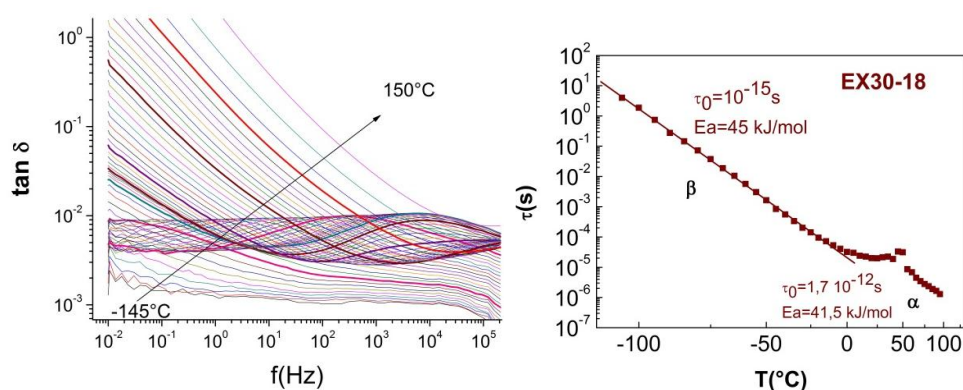


Figure S3. Dielectric losses of EX30-18 peptide and temperature dependence of the relaxation times of the two relaxation modes.

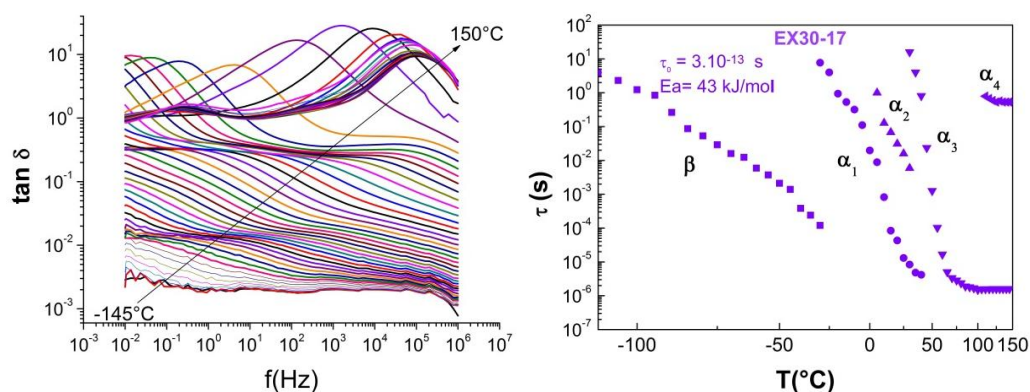


Figure S4. Dielectric losses of EX30-17 peptide and temperature dependence of the relaxation times of the five modes.